

## EXECUTIVE BOARD RESOLUTION

**RESOLUTION NO. OR-24-016**  
**August 5, 2024**

WHEREAS, The Secretary of Administration has requested, pursuant to Sections 212 and 709(b) of *The Administrative Code of 1929*, approval to transfer the Salary Administration Division from the Bureau of Organization Management to the Talent Management Office; and in the Agency HR Operations Office, rename the Labor and Industry HR Office to the Labor and Industry and Banking and Securities HR Office, rename the Revenue HR Office to the Revenue and Insurance HR Office, and abolish the Insurance and Banking and Securities HR Office; Therefore, be it

RESOLVED, That the Secretary of Administration is hereby granted approval to make the above-mentioned **changes shown by (bold) and an asterisk\***; and, be it further

RESOLVED, That the attached organizational chart reflecting the above changes will be submitted to the Legislative Reference Bureau for publication in the *Pennsylvania Bulletin* and *Pennsylvania Code*.

❖ Secretary

- Office of Communications and Legislative Affairs
- Deputy Secretary for Information Technology
  - Shared Services Transformation Office
  - Commonwealth Office of Digital Experience Pennsylvania (CODE-PA)
  - Integrated Enterprise System Office
    - Bureau of Business Operations
    - Bureau of Service Delivery
    - Bureau of Technical Operations
  - Enterprise Data Office
    - Bureau of Geospatial Services
  - Enterprise Information Security Office
    - Information Technology Delivery Center Information Security Offices
  - Technology Business Office
    - Bureau of IT Policy and Performance Management
    - Bureau of IT Project Management
    - Bureau of IT Financial Management
    - Bureau of IT Service Management

- ◆ Service Quality Assurance Division
  - ◆ Service Management Automation and Integration Division
- Enterprise Solutions Office
  - Bureau of Application Management Services
  - Bureau of Software Platform Services
  - Bureau of Commercial Off-the-Shelf Services
  - Bureau of Solution Architecture
  - Bureau of Operational Support
- Enterprise Technology Services Office
  - Bureau of Enterprise Shared Technology Services
    - ◆ Network, Unified Telecommunications, and Security Operations Division
    - ◆ Compute and Cloud Services Division
    - ◆ Endpoint Technology and User Management Division
  - Bureau of Service Value Management
    - ◆ Project Management Division
    - ◆ Contract Compliance Division
  - Technology Services Office
- Conservation and Environment Information Technology Delivery Center
  - Business and Service Management Division
  - Solutions Management Division
  - Data Management and Analytics Division
  - Geographic Information Systems Division
- Health and Human Services Information Technology Delivery Center
  - Business Management Division
  - Service Management Division
  - Solutions Management–Human Services and Aging Division
  - Solutions Management–Health and Drug and Alcohol Programs Division
  - Department of Military and Veterans Affairs IT Division
- Infrastructure and Economic Development Information Technology Delivery Center
  - Business and Service Management Division
  - Solutions Management Division
  - Data Management and Analytics Division
- Employment, Banking, and Revenue Information Technology Delivery Center
  - Project and Strategy Management Division
  - Service Management Division
  - Solutions Management–Revenue, Lottery, Insurance, and Banking and Securities Division
  - Solutions Management–Labor and Industry and State Division
  - Solutions Management–Cross Application Integration Division
  - Architecture, Data Management, and Analytics Division

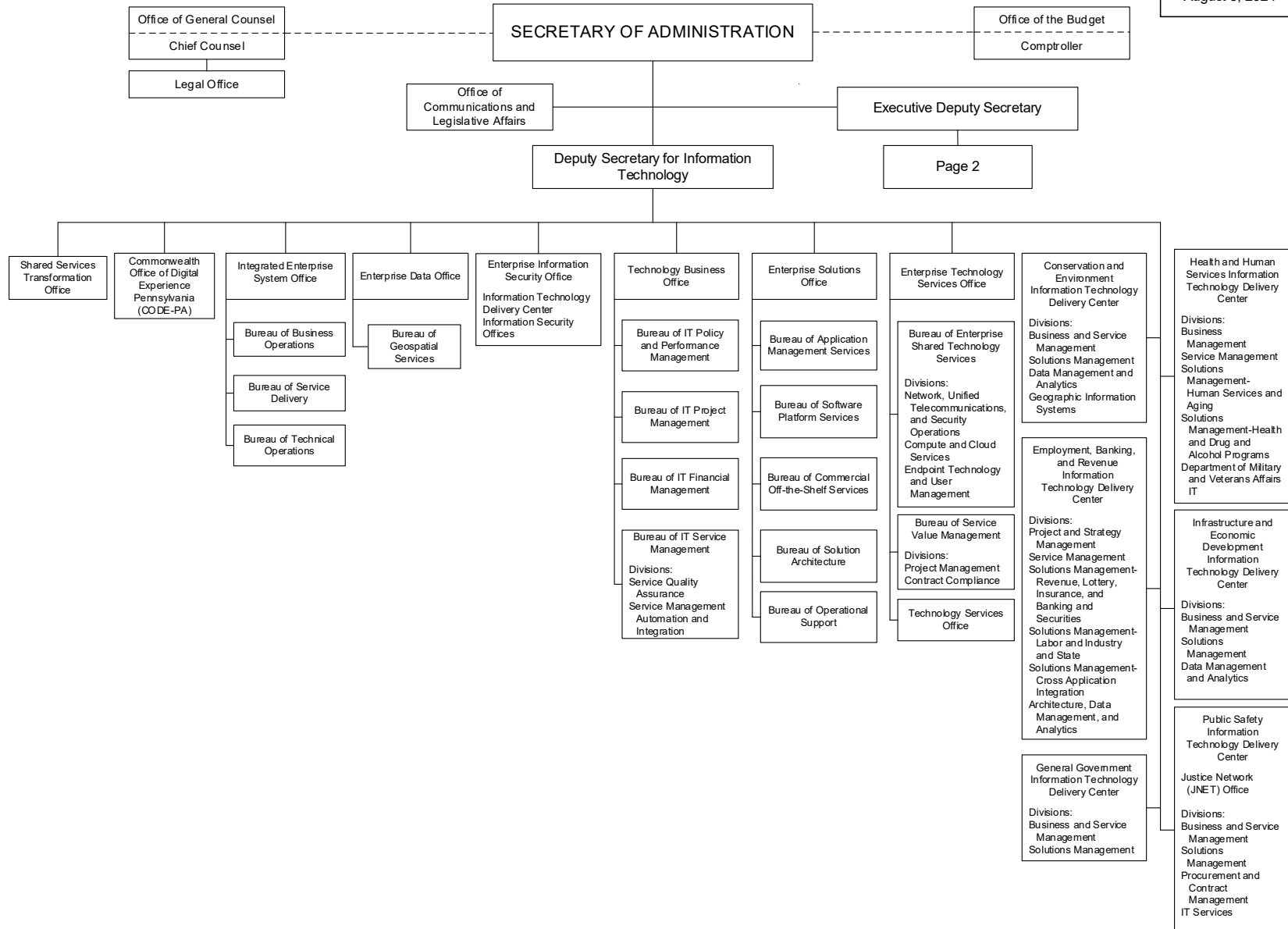
- Public Safety Information Technology Delivery Center
  - Justice Network (JNET) Office
  - Business and Service Management Division
  - Solutions Management Division
  - Procurement and Contract Management Division
  - IT Services Division
- General Government Information Technology Delivery Center
  - Business and Service Management Division
  - Solutions Management Division
- Executive Deputy Secretary
  - Office of Continuity and Records Information Management
  - Equal Employment Opportunity Office
    - Bureau of Equal Employment Opportunity Policy and Appeals
    - Bureau of Equal Employment Opportunity Investigations
  - Deputy Secretary for Human Resources and Management
    - Talent Management Office
      - ◆ Bureau of Organization Management
        - Position Classification Services Division
        - Classification Plan Management Division
        - Special Services Division
        - Grievance and Arbitration Division
      - ◆ Bureau of Talent Acquisition
        - Posting Development Division
        - Evaluation Division
        - Referral, Audit, and Policy Support Division
      - ◆ **\*Salary Administration Division**
      - ◆ Bureau of Talent Planning and Development
        - Talent Planning Division
        - eLearning Design and LMS Division
        - Curriculum and Program Design Division
        - Organizational Development and Agency Services Division
      - ◆ Bureau of Enterprise Recruitment
        - Enterprise Recruitment Division
        - Temporary Services Division
        - Work-Based Learning Division
    - Employee Relations and Workforce Support Office
      - ◆ Bureau of Employee Relations
      - ◆ Bureau of Workforce Support
      - ◆ Bureau of Employee Benefits
    - HR Shared Services Office

- ◆ Human Resources Service Center
  - Employee Services Division
  - Agency Services Division
  - Time Services Division
  - Work Related Injury Services Division
- ◆ HR Systems Office
- ◆ HR Analytics and Program Support Office
- Agency HR Operations Office
  - ◆ Community and Economic Development HR Office
  - ◆ Conservation and Natural Resources, Agriculture, and Milk Board HR Office
    - Talent Management Division
    - Employee Relations and Workforce Support Division
  - ◆ Corrections, Parole Board, Board of Pardons, Commission on Crime and Delinquency, Office of Victim Advocate, and Sexual Offenders Assessment Board HR Office
    - Talent Management Division
    - Employee Relations and Workforce Support Division
    - Field Operations Division
  - ◆ Emergency Management Agency HR Office
  - ◆ Education HR Office
  - ◆ Environmental Protection and Environmental Hearing Board HR Office
    - Talent Management Division
    - Employee Relations and Workforce Support Division
  - ◆ General Government HR Office
    - Talent Management Division
    - Employee Relations and Workforce Support Division
  - ◆ Health HR Office
    - Talent Management Division
    - Employee Relations and Workforce Support Division
  - ◆ Human Services HR Office
    - Talent Management Division
    - Employee Relations and Workforce Support Division
    - Field Operations Division
  - ◆ **\*Labor and Industry and Banking and Securities HR Office**
    - Talent Management Division
    - Employee Relations and Workforce Support Division
  - ◆ Military and Veterans' Affairs HR Office
    - Talent Management Division
    - Employee Relations and Workforce Support Division
    - Field Operations Division

- ◆ **\*Revenue and Insurance HR Office**
  - Talent Management Division
  - Employee Relations and Workforce Support Division
- ◆ State Police HR Office
  - Talent Management Division
  - Employee Relations and Workforce Support Division
- ◆ State HR Office
- ◆ Transportation HR Office
  - Talent Management Division
  - Employee Relations and Workforce Support Division
  - Field Operations Division

# GOVERNOR'S OFFICE OF ADMINISTRATION

OR-24-016  
August 5, 2024



# GOVERNOR'S OFFICE OF ADMINISTRATION

OR-24-016  
August 5, 2024

