

WHEREAS, The Commissioner of the Department of Insurance has requested, pursuant to Sections 212 and 709(b) of *The Administrative Code of 1929*, approval to abolish the Bureau of Administration's Human Resources and Equal Employment Opportunity Division; Therefore, be it

RESOLVED, That the Commissioner of the Department of Insurance is hereby granted approval to make the above-mentioned change; and, be it further

RESOLVED, That the attached organizational chart reflecting the above change will be submitted to the Legislative Reference Bureau for publication in the *Pennsylvania Bulletin* and *Pennsylvania Code*.

Insurance Commissioner

Communications Office

Legislative Office

Policy Office

Administrative Hearings Office

Special Projects Office

Executive Deputy Insurance Commissioner

Deputy Insurance Commissioner for Insurance Product Regulation and Administration

Bureau of Administration  
Budget Division  
Office Management Division

Bureau of Property and Casualty Insurance  
Actuarial Review Division  
Policy Review Division

Bureau of Life, Accident and Health Insurance  
Actuarial Review Division  
Policy Review Division

Deputy Insurance Commissioner for Corporate and Financial Regulation

Bureau of Financial Examinations

Bureau of Company Licensing and Financial Analysis  
Financial Analysis Division  
Company Licensing Division

Deputy Insurance Commissioner for Market Regulation

Bureau of Consumer Services  
Health Care Division  
Property, Casualty and Life Division

Bureau of Market Actions  
Life and Health Market Actions Division  
Property and Casualty Market Actions Division  
Market Analysis Division

Bureau of Licensing and Enforcement  
Licensing Services Division  
Enforcement Division  
Fraud Division

Deputy Insurance Commissioner for Liquidations, Rehabilitations and  
Special Funds

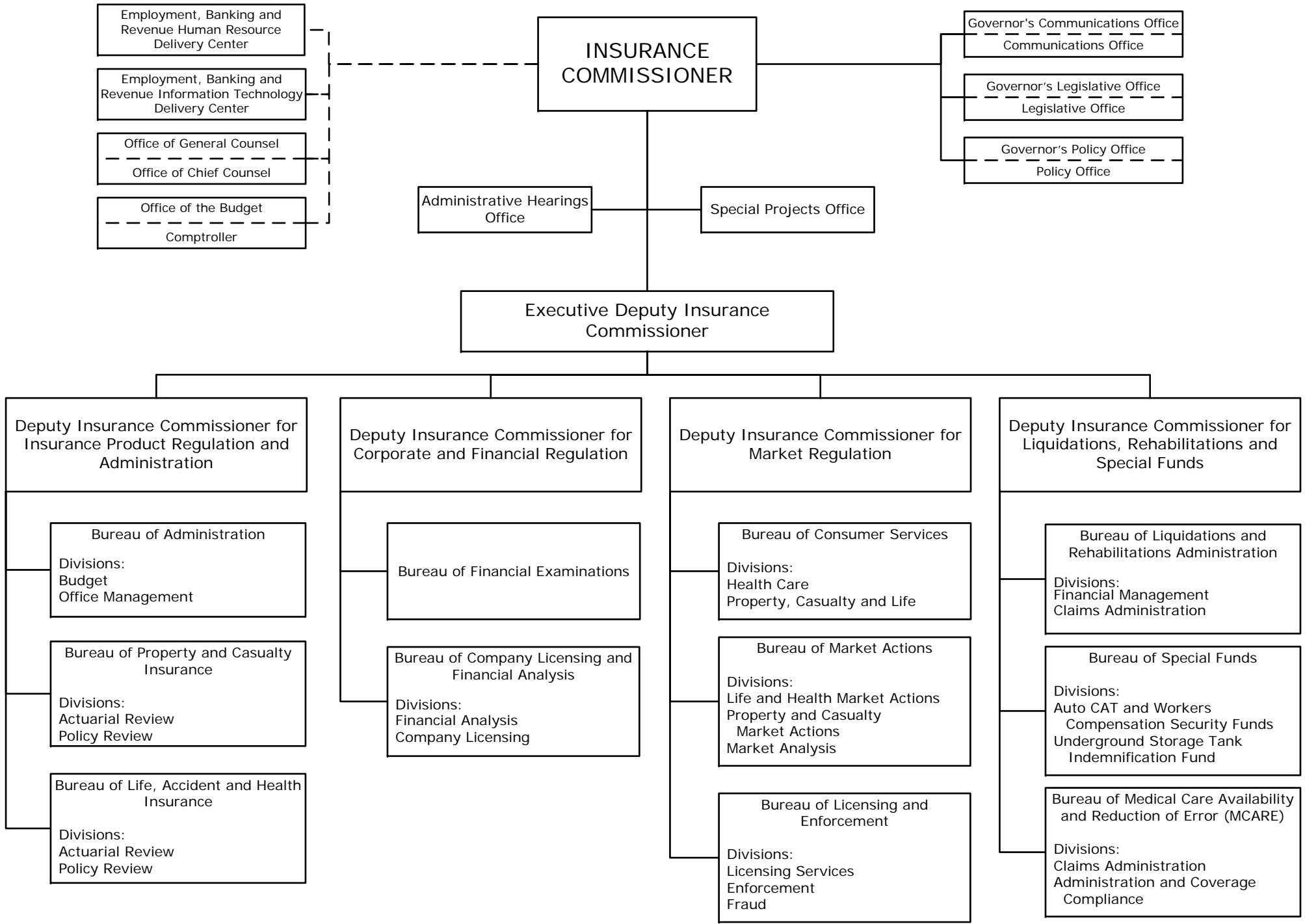
Bureau of Liquidations and Rehabilitations Administration  
Financial Management Division  
Claims Administration Division

Bureau of Special Funds  
Auto CAT and Workers Compensation Security Funds Division  
Underground Storage Tank Indemnification Fund Division

Bureau of Medical Care Availability and Reduction of Error (MCARE)  
Claims Administration Division  
Administration and Coverage Compliance Division

# INSURANCE DEPARTMENT

OR-18-017  
September 17, 2018



Employment, Banking and Revenue Human Resource Delivery Center

Employment, Banking and Revenue Information Technology Delivery Center

Office of General Counsel  
Office of Chief Counsel

Office of the Budget  
Comptroller

INSURANCE COMMISSIONER

Governor's Communications Office  
Communications Office

Governor's Legislative Office  
Legislative Office

Governor's Policy Office  
Policy Office

Administrative Hearings Office

Special Projects Office

Executive Deputy Insurance Commissioner

Deputy Insurance Commissioner for Insurance Product Regulation and Administration

Deputy Insurance Commissioner for Corporate and Financial Regulation

Deputy Insurance Commissioner for Market Regulation

Deputy Insurance Commissioner for Liquidations, Rehabilitations and Special Funds

Bureau of Administration  
Divisions: Budget Office Management

Bureau of Property and Casualty Insurance  
Divisions: Actuarial Review Policy Review

Bureau of Life, Accident and Health Insurance  
Divisions: Actuarial Review Policy Review

Bureau of Financial Examinations

Bureau of Company Licensing and Financial Analysis  
Divisions: Financial Analysis Company Licensing

Bureau of Consumer Services  
Divisions: Health Care Property, Casualty and Life

Bureau of Market Actions  
Divisions: Life and Health Market Actions Property and Casualty Market Actions Market Analysis

Bureau of Licensing and Enforcement  
Divisions: Licensing Services Enforcement Fraud

Bureau of Liquidations and Rehabilitations Administration  
Divisions: Financial Management Claims Administration

Bureau of Special Funds  
Divisions: Auto CAT and Workers Compensation Security Funds Underground Storage Tank Indemnification Fund

Bureau of Medical Care Availability and Reduction of Error (MCARE)  
Divisions: Claims Administration Administration and Coverage Compliance