

Commonwealth of Pennsylvania

State GeoBoard Meeting

November 6, 2017

Agenda

- Welcome and Introductions
- US Census Bureau
- Task Force Updates
- New Business
 - PEMA Update
 - NENA Update
 - Legislative Items
 - Outreach
 - Topics for Next Meeting
- Adjourn

US Census Bureau

Nathan Jones
Allison Shafer
Sara Cassidy

US Census Bureau

Boundary and Annexation Survey (BAS) and State Certification Program

Geography Division

U.S. Census Bureau



U.S. Department of Commerce
Economics and Statistics Administration
U.S. CENSUS BUREAU
[census.gov](https://www.census.gov)

Agenda

- **Boundary and Annexation Survey (BAS)**
 - BAS Overview
 - American Community Survey (ACS) and Population Estimates Program (PEP)
 - Why is BAS important and who should respond?
 - BAS Annual Response
 - BAS Schedule
 - State and County Agreements
 - Participation Methods (Digital BAS, GUPS, Paper Maps)
 - State Certification
 - BAS website

BAS – Who is Included

- Governmental Units (GUs) included in the BAS:
 - American Indian reservations and federally recognized off-reservation trust lands
 - States
 - Counties
 - Minor Civil Divisions (MCDs)
 - Incorporated Places
 - Consolidated Cities (e.g. Louisville/Jefferson County)

Why We Conduct the BAS

- Ensure that legal boundaries, and consequently, population, are correctly recorded with the federal government
- Tabulate and present statistical data released for various censuses and surveys:
 - American Community Survey (ACS)
 - Population Estimates Program (PEP)
 - Decennial Census Programs
- Support the Office of Management and Budget (OMB) Circular No. A-16
 - Collecting and maintain boundaries for legal areas
 - Geo.data.gov
 - The National Map (<http://nationalmap.gov/>)

American Community Survey (ACS)

- Ongoing survey providing vital information on an annual basis about our nation and its people:
 - ☒ Demographics
 - ☒ Housing
 - ☒ Social
 - ☒ Economic
- Allows communities to see how they are changing
- Products include data profiles, geographic comparison profiles, and detailed tables
- <http://www.census.gov/programs-surveys/acs/>

Population Estimates Program (PEP)

- Produces estimates of the population for the U.S., its states, counties, cities, and towns, as well as the Commonwealth of Puerto Rico and its municipios.
- Uses current data on births, deaths, and migrations to calculate population change since the most recent decennial census
- Produces time series of estimates of population, demographic change, and housing units
- Estimates used in federal funding allocations
- <https://www.census.gov/population/intmigration/data/popestprog.html>

Why You Should Participate

- Accurate boundaries allow us to count your community's residents accurately
- Helps Census Bureau produce accurate data
- Accurate count helps the federal government allocate more than \$675 billion in federal funds
- Provides important information for community planning and decision-making
 - ☑Education ☑Housing ☑Health care services ☑Services for the elderly

Boundary Discrepancies

Entity's Participation Status:

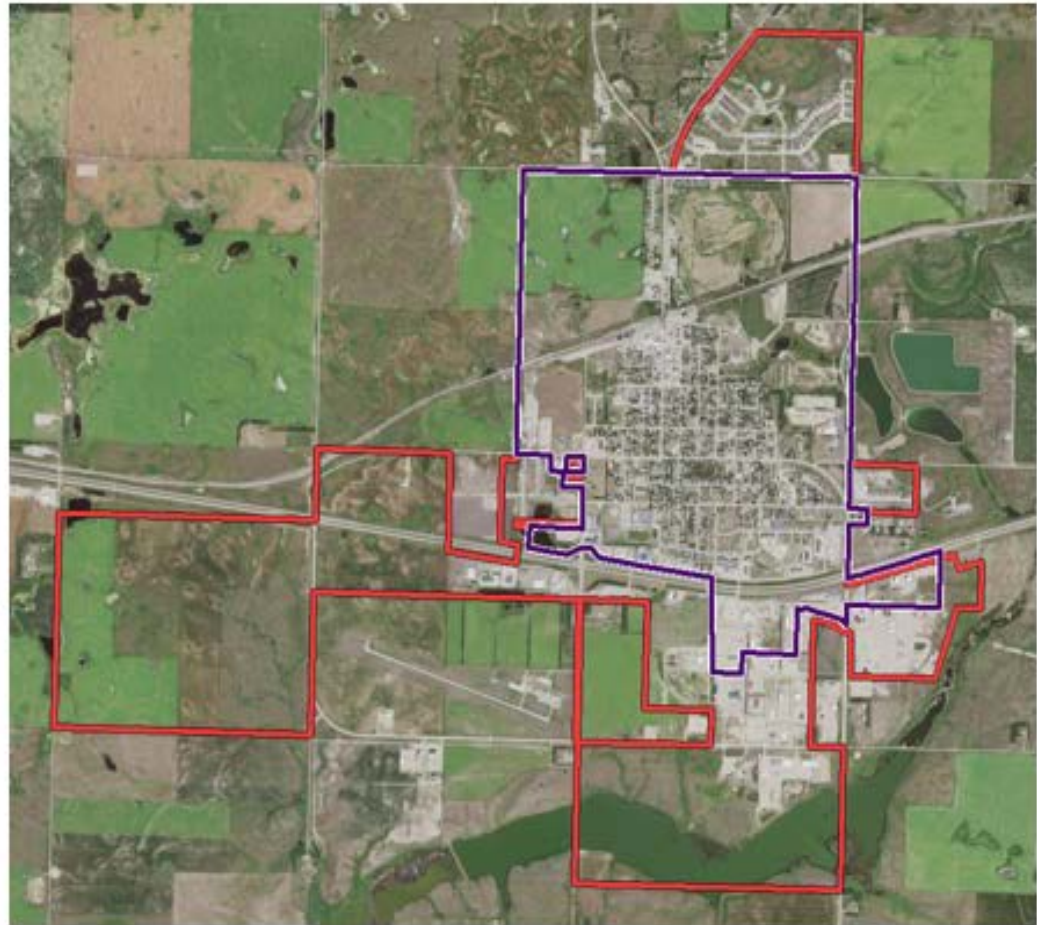
2017 BAS: No Changes

2016 BAS: No Response

2015 BAS: No Response

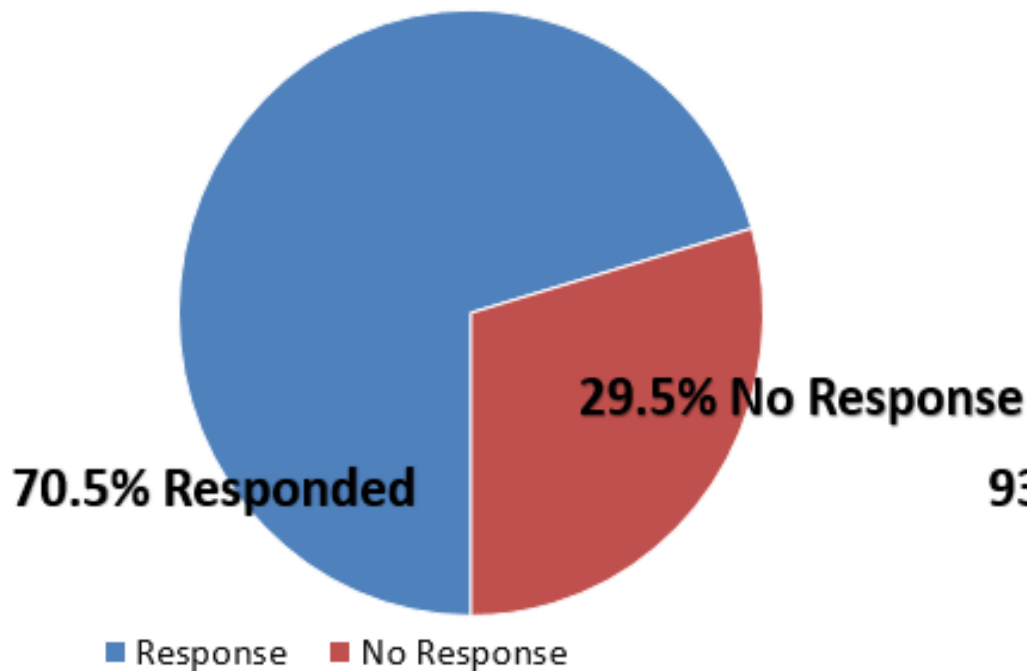
— Census Bureau's TIGER data

— Partner source data

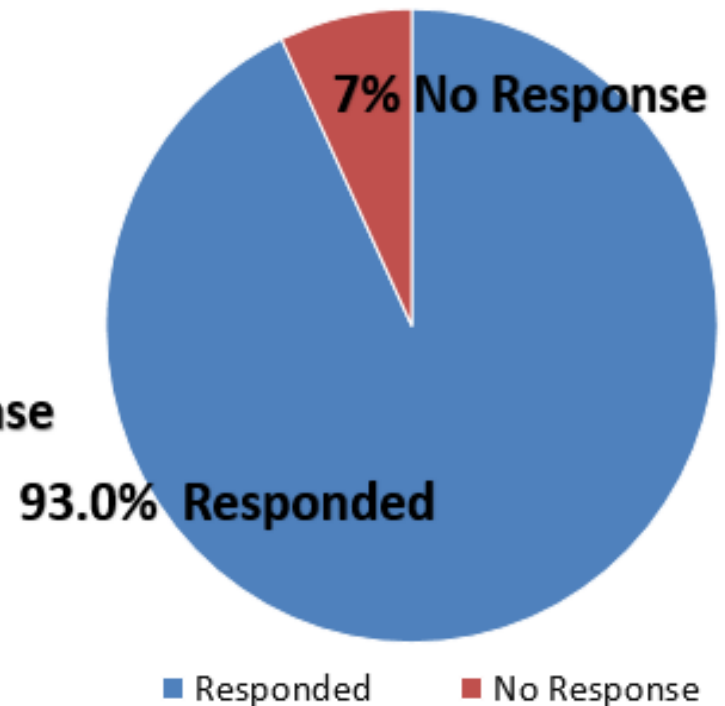


Pennsylvania 2017 BAS Participation

Total Universe Participation



Reporting Universe



BAS Contacts

- How does the Census Bureau determine the BAS contact?
 - Local officials inform us.
 - A local government employee responding to the BAS for consecutive years will be assigned as the BAS contact.
 - If we have not received a BAS response for several years, we will attempt to establish a contact in either the local planning or GIS department.
 - The State Data Center (SDC) provides contact updates to the Census Bureau during the telephone follow-up phase of BAS.
 - If contact cannot be established, the BAS materials are mailed to the Highest Elected Official (HEO).
 - For federally recognized tribes, the BAS materials are mailed to the Tribal Chairperson unless the tribe provides another contact.

BAS Annual Response

- **Annual Response:**

- Annual response letters emailed to BAS contacts for all governmental units in January.
- Respondents provide updates to the HEO/BAS contacts and indicate whether or not they have boundary changes to report.
- PDF maps, shapefiles, and forms are available on the BAS website.

The screenshot shows the 'Boundary and Annexation Survey (BAS) Contact Update / Annual Response Form'. It includes instructions for users to update contact information and respond to the survey. The form contains several sections with input fields and dropdown menus:

- Instructions:** Explains the purpose of the form and how to use it.
- Required Fields:** Includes fields for BASID, GEOID, Entity Name, and a checkbox for 'Indicates a required field'.
- HEO/Highly Elected Official (Tribal Chair) Contact:** Includes fields for First Name, Last Name, Department Name, Position, Elected Position, Term Expires, Election Cycle/Term, Shipping Address, City, State, Zip, Phone, Extension, Fax, and Email.
- BAS Contact:** Includes fields for First Name, Last Name, and Department Name.

https://www.census.gov/geo/partnerships/bas/bas_ar_form.html

2018 BAS Schedule

Activity	Date(s)
Annual Response information emailed	January 2018
Non-response follow up	Mid-February 2018
Deadline for BAS submission to be included in Population Estimates Program (PEP) and American Community Survey (ACS)	March 1, 2018
State Data Center non-response follow up	March 2018
Deadline for BAS submission to be reflected in 2019 BAS materials	May 31, 2018

BAS State Agreements

- **Available to states that enforce laws requiring local governments to report boundary changes to a state level agency.**
- **Two Agreement types:**
 - Reports boundary changes to the annual BAS for all entities within its jurisdiction
 - State provides Census Bureau with list of local governments that reported changes to the state.
- **State participation improves the BAS process:**
 - Reduces duplication of effort in collecting information
 - Reduces the burden and cost on local governments
 - Improves the completeness of boundary data collected

Consolidated BAS (CBAS) Agreements

- The county government responds to the BAS for the governmental units within their jurisdiction that agree to participate
- County participation improves the BAS process by:
 - Reduces duplication of effort in collecting information
 - Reduces the burden and cost on local governments
 - Improves the completeness of boundary data collected
- CBAS agreements in PA:
 - Adams
 - Centre
 - Lawrence
 - York

2018 BAS – Participation Methods

- **Digital BAS**

- Designed to accept submissions from experienced users of Geographic Information Systems (GIS) who have the ability to modify Census Bureau shapefiles and create change polygons
- Spatial data provided in GIS shapefile format

- **Geographic Update Partnership Software (GUPS)**

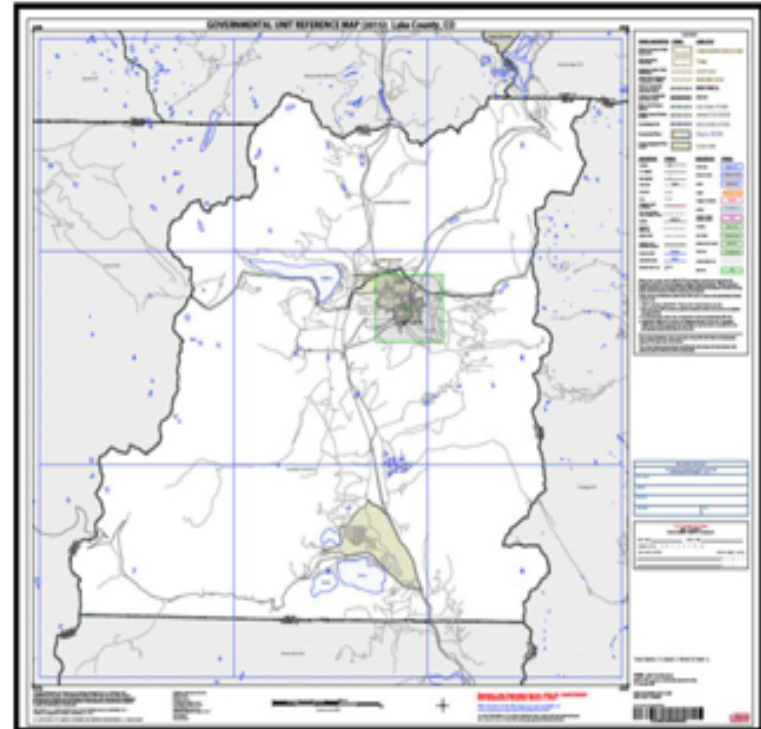
- GUPS is based on an open-source platform known as QGIS. It is a customized geographic information system (GIS) provided by the Census Bureau. GUPS is tailored to meet the needs of those without extensive GIS experience and replaces the MAF/TIGER Partnership Software (MTPS) previously used in BAS.

- Goal is to provide governmental units the option to use a GIS to create BAS submission files and electronically submit the files to the Census Bureau

2018 BAS – Participation Methods

- **Paper**

- Paper BAS is designed for participants who prefer to update their boundary and attribute information on paper maps.
- Participants annotate their boundary, feature, and attribute changes on Census Bureau-provided paper maps



BAS State Certification

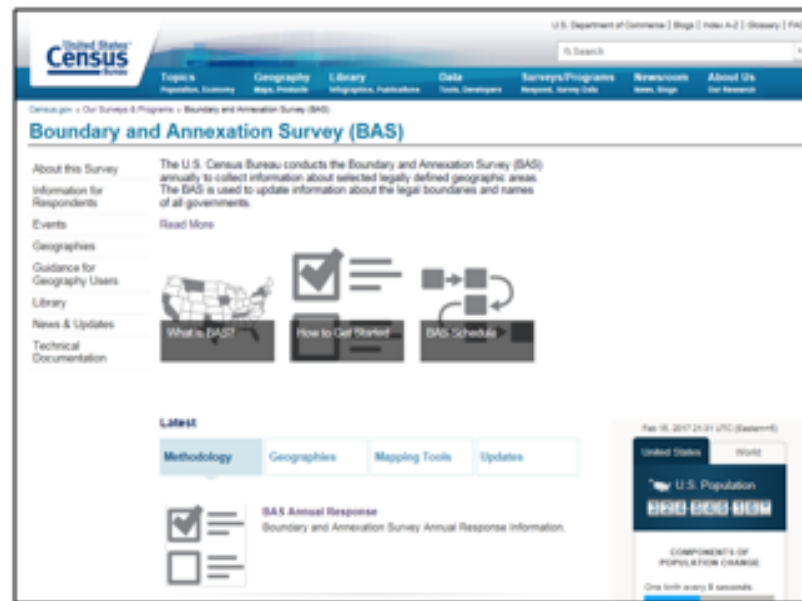
- A program for governor-appointed State Certifying Official's (SCOs), to review information that local governments reported during previous BAS years
 - Legal boundary changes (annexations and deannexations)
 - Functional status of governments
 - Legal names of governmental units
- Verify that legal boundary changes and governmental unit status changes reported to the BAS are legal.
- For boundary changes flagged as invalid by the state:
 - The entity is responsible for resolving the discrepancy with the proper state authority.
 - After resolving the issue, the entity may submit the valid boundary change to the BAS.

Legal Disputes

- If it comes to our attention that an area of land is in dispute between two or more jurisdictions, we will not make boundary changes until the parties come to a written agreement, or there is a documented final court decision regarding the matter/dispute.

BAS Website

- **BAS Website:** Contains BAS program information, schedule, BAS maps and shapefiles, BAS forms, etc.:
<https://www.census.gov/programs-surveys/bas/about.html>



Questions?

Contact Us

Email: geo.bas@census.gov

Phone: 1-800-972-5651 (toll free)

Alternate: 1-301-763-1099



U.S. Department of Commerce
Economics and Statistics Administration
U.S. CENSUS BUREAU
census.gov

[Contact Us](#)

Task Force Updates

Data Program Task Force

- **Base Map Update**

- Reviewing base map layer data document write-ups
- Looking to have Stage 1 base map data sources identified and discussed at next GeoBoard meeting – February, 2018
- Visioning for Stage 2

- **Data Sharing Agreement**

- Strategy meeting held at CCAP to discuss approach for developing communications

Governance Task Force

Strategic Plan

- Released for Public Comment: September 28th
- Comment Period Ended: November 3rd
- Next Steps – Review Comments & Incorporate Necessary Changes, Professional Writer Review, GeoBoard Vote

Governance Task Force

Legislative Review Subcommittee FOCUS: HB1106

- Met 4 Times
- Information Gathering Process Nearing Completion
- Included PSLS GeoBoard Member in 11/6 Subcommittee Meeting
- Next Steps: Wrap up & draft a recommendation for the GeoBoard on HB1106

Governance Task Force

Legislative Review Subcommittee

FOCUS: HB1106

Update to S.1253

- Abandoned
- New “compromise” bill will be introduced as a bipartisan document.
 - Removed procurement language
 - Rolled back definition of “geospatial data” to initial 2015 bill’s definition
 - GDA does not affect existing procurement or licensure laws at the federal or state level
- Bill to be introduced shortly

Service Delivery Task Force

Discussion/Action Items:

1. Task Force has identified PASDA as the state-wide data portal
2. PASDA User Session – October 31, 2017
 - Discussed vision, data, services and applications related to PASDA
 - Included a broad range of users
 - Looked at ways to make PASDA better, provide new services and access data more efficiently/effectively
 - Identified needs and priorities for the future
 - Form a subgroup to work with PASDA to review the session and plan next steps

New Business

- PEMA Update – Jeff Boyle
- NENA Update – Barry Hutchins
- Legislative Items
- Outreach
- Topics for Next Meeting

Future Meetings

- February 26, 2018 1:30 – 3:00 PM
- May 21, 2018 1:30 – 3:00 PM
- August 20, 2018 1:30 – 3:00 PM
- November 5, 2018 1:30 – 3:00 PM

Location: 333 Market Street, Harrisburg, PA 17126-0333