

**EXECUTIVE BOARD RESOLUTION**

**RESOLUTION NO. OR-23-013**  
**July 5, 2023**

WHEREAS, The Secretary of the Department of Human Services has requested, pursuant to Sections 212 and 709(b) of *The Administrative Code of 1929*, approval to consolidate the Division of Fiscal Policy and the Division of Fiscal Compliance as the Division of Fiscal Policy and Compliance in the Office of Children, Youth and Families, Bureau of Budget and Fiscal Support; Therefore, be it

RESOLVED, That the Secretary of the Department of Human Services is hereby granted approval to make the above-mentioned **changes shown by (bold) and an asterisk\***; and, be it further

RESOLVED, That the attached organizational charts reflecting the above changes will be submitted to the Legislative Reference Bureau for publication in the *Pennsylvania Bulletin* and *Pennsylvania Code*.

❖ Secretary

- Office of Policy Development
- Press and Communications Office
- Office of Legislative Affairs
- Budget Office
  - Bureau of Budget
    - Division of Medical Assistance
    - Division of Administration, Program Support, and Child Development
    - Division of Institutional and County Grant Programs
- Developmental Disabilities Planning Council
- Executive Deputy Secretary
  - Deputy Secretary for Administration
    - Bureau of Financial Operations
      - ◆ Division of Audit and Review
      - ◆ Division of Financial Policy and Operations
      - ◆ Division of Financial Reporting
    - Bureau of Administrative Services
      - ◆ Division of Facilities and Property Management
      - ◆ Division of Support Services
      - ◆ Division of Emergency Planning and Response
    - Bureau of Procurement and Contract Management
      - ◆ Division of Procurement and Grant Management
      - ◆ Division of Compliance and Quality Assurance

- Bureau of Program Integrity
  - ◆ Division of Provider Review
  - ◆ Division of Program and Provider Analysis
  - ◆ Division of Third Party Liability
- Bureau of Hearings and Appeals
- Bureau of Equal Opportunity
- Deputy Secretary for Income Maintenance
  - Bureau of Operations
    - ◆ Area Managers (7)
      - County Boards of Assistance (67)
    - ◆ Division of Staff Development
    - ◆ Division of Special OIM Programs
  - Bureau of Program Support
    - ◆ Division of Management and Budget
    - ◆ Division of Automation Planning and Support
    - ◆ Division of Statistical Analysis
    - ◆ Division of Office Services
  - Bureau of Policy
    - ◆ Division of Family Assistance
    - ◆ Division of Health Services
    - ◆ Division of Federal Programs and Program Management
  - Bureau of Program Evaluation
    - ◆ Division of Corrective Action
    - ◆ Division of Quality Control
  - Bureau of Child Support Enforcement Programs
    - ◆ Division of Field Operations
    - ◆ Division of Central Operations
    - ◆ Division of Program Development and Evaluation
    - ◆ Division of Child Support Enforcement Systems
    - ◆ Division of Financial Services and Transactions
  - Bureau of Employment Programs
    - ◆ Division of Contracted Programs and Systems
    - ◆ Division of Employment and Training Guidance and Analytics
- Deputy Secretary for Medical Assistance Programs
  - Children’s Health Insurance Program Office
  - eHealth Partnership Program Office
  - Bureau of Data and Claims Management
    - ◆ Division of Medicaid Management Information System (MMIS) Operations
    - ◆ Division of MMIS Technical Services
    - ◆ Division of MMIS Systems, Monitoring and Oversight

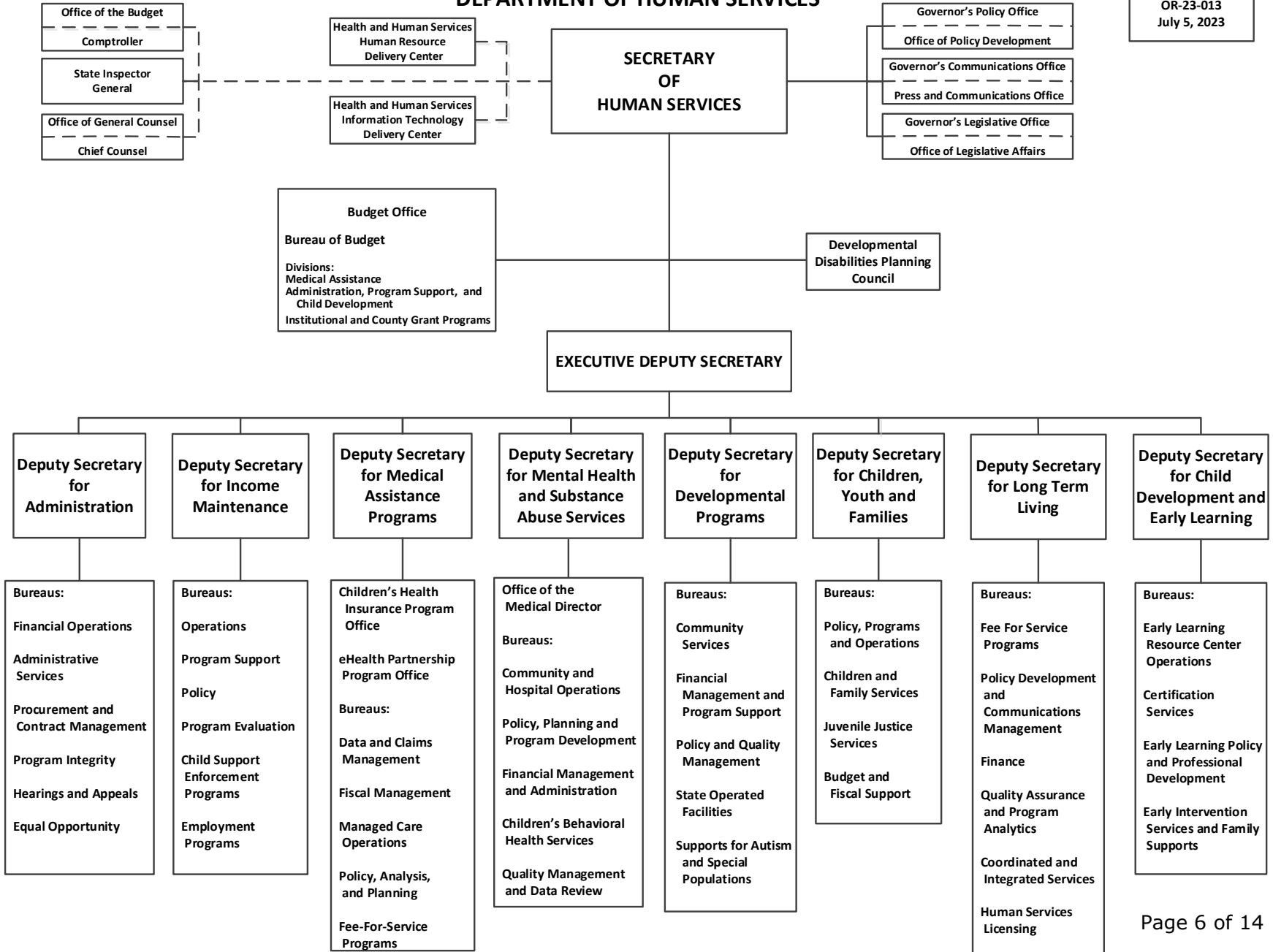
- Bureau of Fiscal Management
  - ◆ Division of Special Payments
  - ◆ Division of Financial Analysis and Reporting
  - ◆ Division of HealthChoices Rates
  - ◆ Division of Hospital and Outpatient Rate Setting
  - ◆ Division of Budget and Contracts
- Bureau of Managed Care Operations
  - ◆ Division of Monitoring and Compliance
  - ◆ Division of Quality and Special Needs Coordination
  - ◆ Division of Program and Transportation Initiatives
- Bureau of Policy, Analysis, and Planning
  - ◆ Division of Regulatory and Program Development
  - ◆ Division of Planning, Evaluation, and Analysis
- Bureau of Fee-For-Service Programs
  - ◆ Division of Clinical Review
  - ◆ Division of Provider Enrollment
  - ◆ Division of Operations
- Deputy Secretary for Mental Health and Substance Abuse Services
  - Office of the Medical Director
  - Bureau of Community and Hospital Operations
    - ◆ Division of Eastern Operations
    - ◆ Division of Western Operations
    - ◆ Division of Hospital Operations
  - Bureau of Policy, Planning and Program Development
    - ◆ Division of Behavioral Health Policy
    - ◆ Division of Planning and Program Development
    - ◆ Division of Substance Abuse Services
  - Bureau of Financial Management and Administration
    - ◆ Division of Medicaid Finance
    - ◆ Division of Budget and Administrative Services
  - Bureau of Children’s Behavioral Health Services
    - ◆ Division of Children’s Policy and Program Development
    - ◆ Division of Service Delivery
  - Bureau of Quality Management and Data Review
    - ◆ Division of Systems Management
    - ◆ Division of Quality Management
    - ◆ Division of Utilization Review
- Deputy Secretary for Developmental Programs
  - Bureau of Community Services
    - ◆ Division of Program Operations
    - ◆ Division of Program Administration

- Bureau of Financial Management and Program Support
  - ◆ Division of Financial Management and Cost Based Rate Review
  - ◆ Division of Program Analysis and Provider Assistance
- Bureau of Policy and Quality Management
  - ◆ Division of Policy and Program Innovation
  - ◆ Division of Quality Management
  - ◆ Division of Training and Communications
- Bureau of State Operated Facilities
- Bureau of Supports for Autism and Special Populations
  - ◆ Division of Community Waiver Programs
  - ◆ Division of Autism Managed Care Programs
- Deputy Secretary for Children, Youth and Families
  - Bureau of Policy, Programs and Operations
    - ◆ Division of Policy
    - ◆ Division of Operations
    - ◆ Division of Programs
  - Bureau of Children and Family Services
    - ◆ Southeast Region
    - ◆ Northeast Region
    - ◆ Central Region
    - ◆ Western Region
  - Bureau of Juvenile Justice Services
    - ◆ Division of Administrative Services
    - ◆ Division of Pennsylvania Academic and Career/Technical Training
    - ◆ Regions:
      - Eastern
      - Central
  - Bureau of Budget and Fiscal Support
    - ◆ Division of Administration
    - ◆ **\*Division of Fiscal Policy and Compliance**
    - ◆ Division of County Support
- Deputy Secretary for Long Term Living
  - Bureau of Fee For Service Programs
    - ◆ Division of Provider Operations
    - ◆ Division of Fee For Service Operations
  - Bureau of Policy Development and Communications Management
    - ◆ Division of Policy Development and Analysis
    - ◆ Division of Communications Management
    - ◆ Division of Community Living Program Initiatives
  - Bureau of Finance
    - ◆ Division of Budget Development and Operations
    - ◆ Division of Rate Setting and Auditing

- Bureau of Quality Assurance and Program Analytics
  - ◆ Division of Quality Assurance
  - ◆ Division of Program Analytics
- Bureau of Coordinated and Integrated Services
  - ◆ Division of Participant Supports
  - ◆ Division of Monitoring and Compliance
  - ◆ Division of Integrated Care Programs
- Bureau of Human Services Licensing
  - ◆ Division of Licensing Operations
  - ◆ Division of Professional Development
  - ◆ Division of Regulatory Implementation
  - ◆ Division of Licensing Administration
- Deputy Secretary for Child Development and Early Learning
  - Bureau of Early Learning Resource Center Operations
    - ◆ Division of Fiscal Management and Compliance
    - ◆ Division of Technical Management and Compliance
  - Bureau of Certification Services
    - ◆ Regional Offices:
      - Southeast North Regional Office
      - Southeast South Regional Office
      - Northeast Regional Office
      - Central Regional Office
      - Western Regional Office
  - Bureau of Early Learning Policy and Professional Development
    - ◆ Division of Standards and Professional Development
    - ◆ Division of Policy
  - Bureau of Early Intervention Services and Family Supports
    - ◆ Division of Standards and Reporting
    - ◆ Division of Eastern Operations and Monitoring
    - ◆ Division of Western Operations and Monitoring

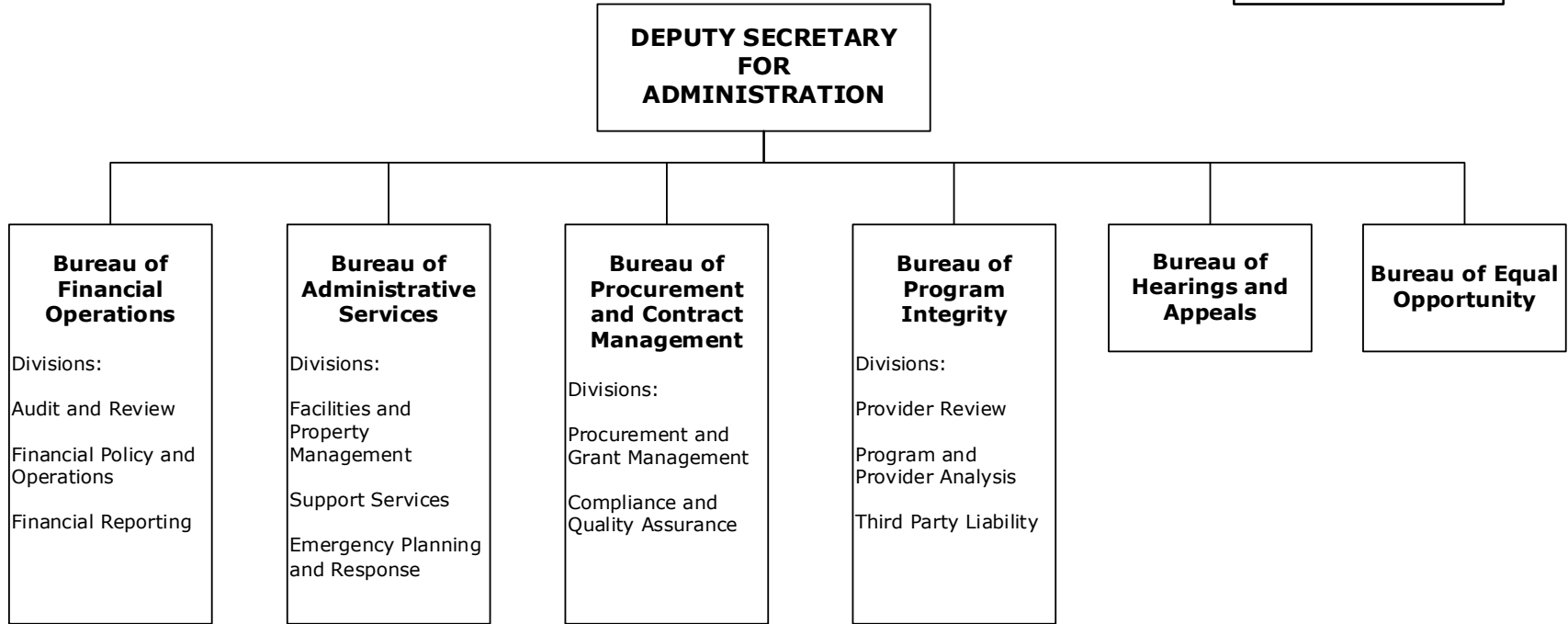
# DEPARTMENT OF HUMAN SERVICES

OR-23-013  
July 5, 2023



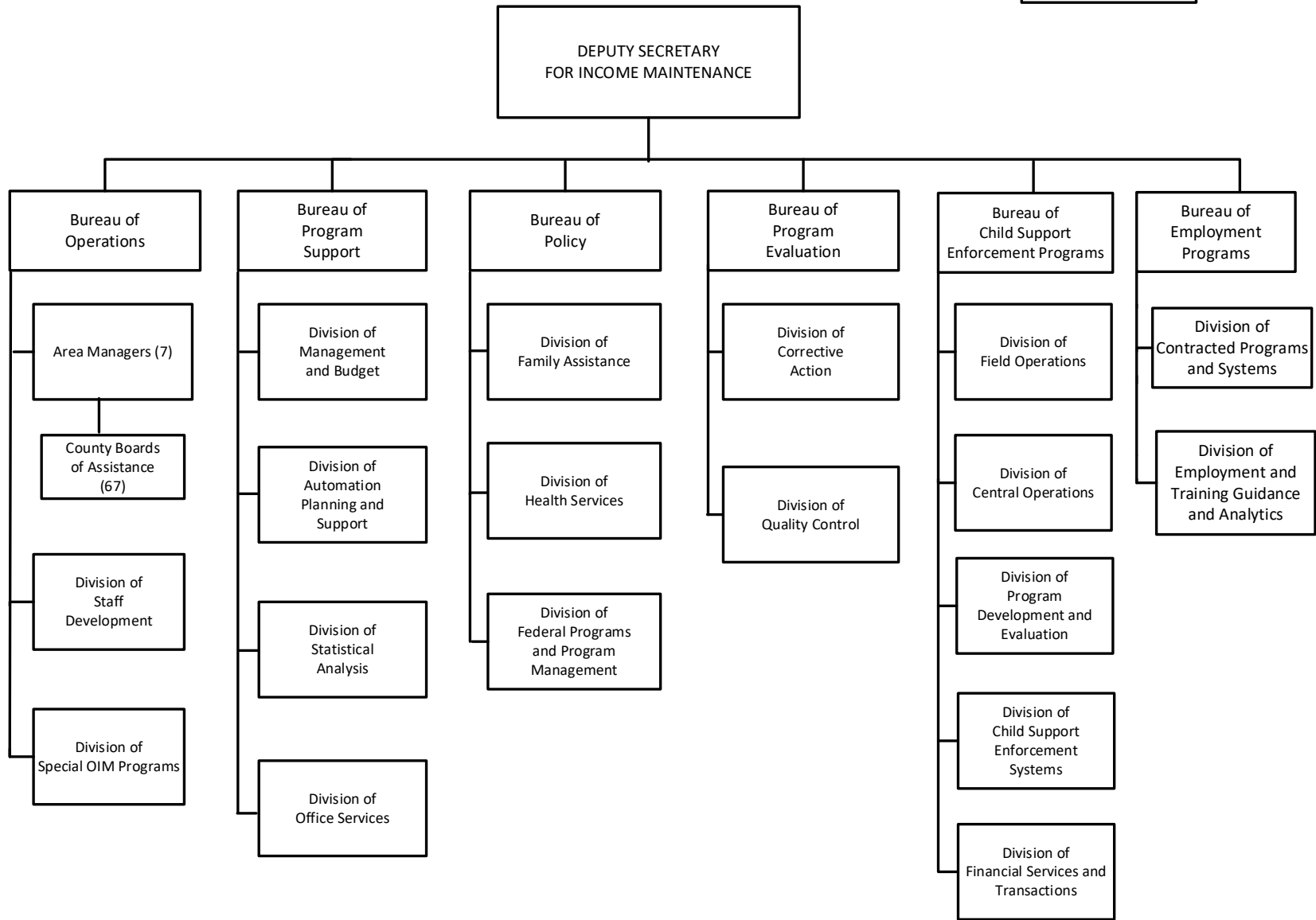
**DEPARTMENT OF HUMAN SERVICES  
DEPUTY SECRETARY FOR ADMINISTRATION**

**OR-23-010  
May 31, 2023**



**DEPARTMENT OF HUMAN SERVICES  
DEPUTY SECRETARY FOR INCOME MAINTENANCE**

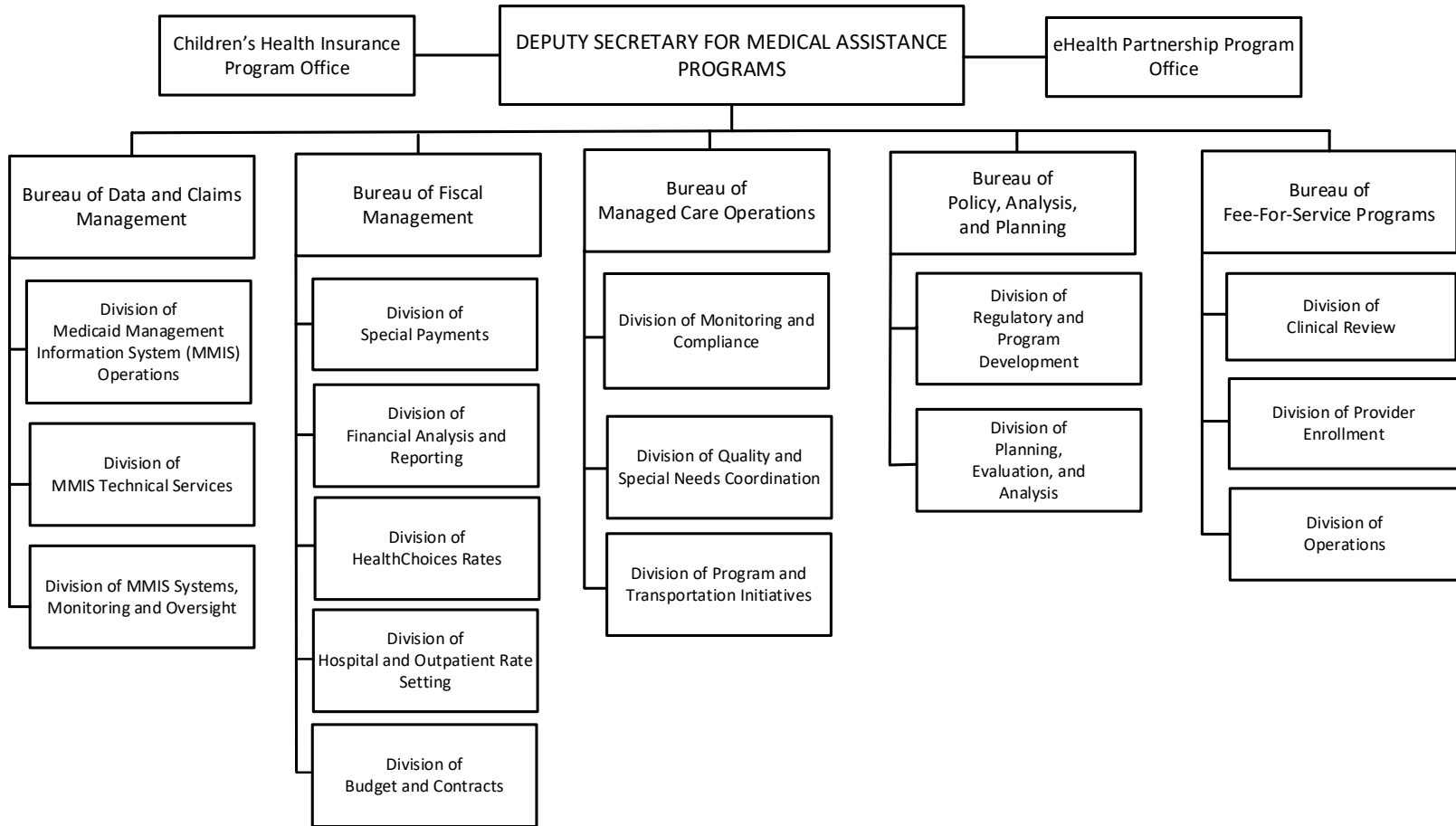
OR-16-031  
January 25, 2017





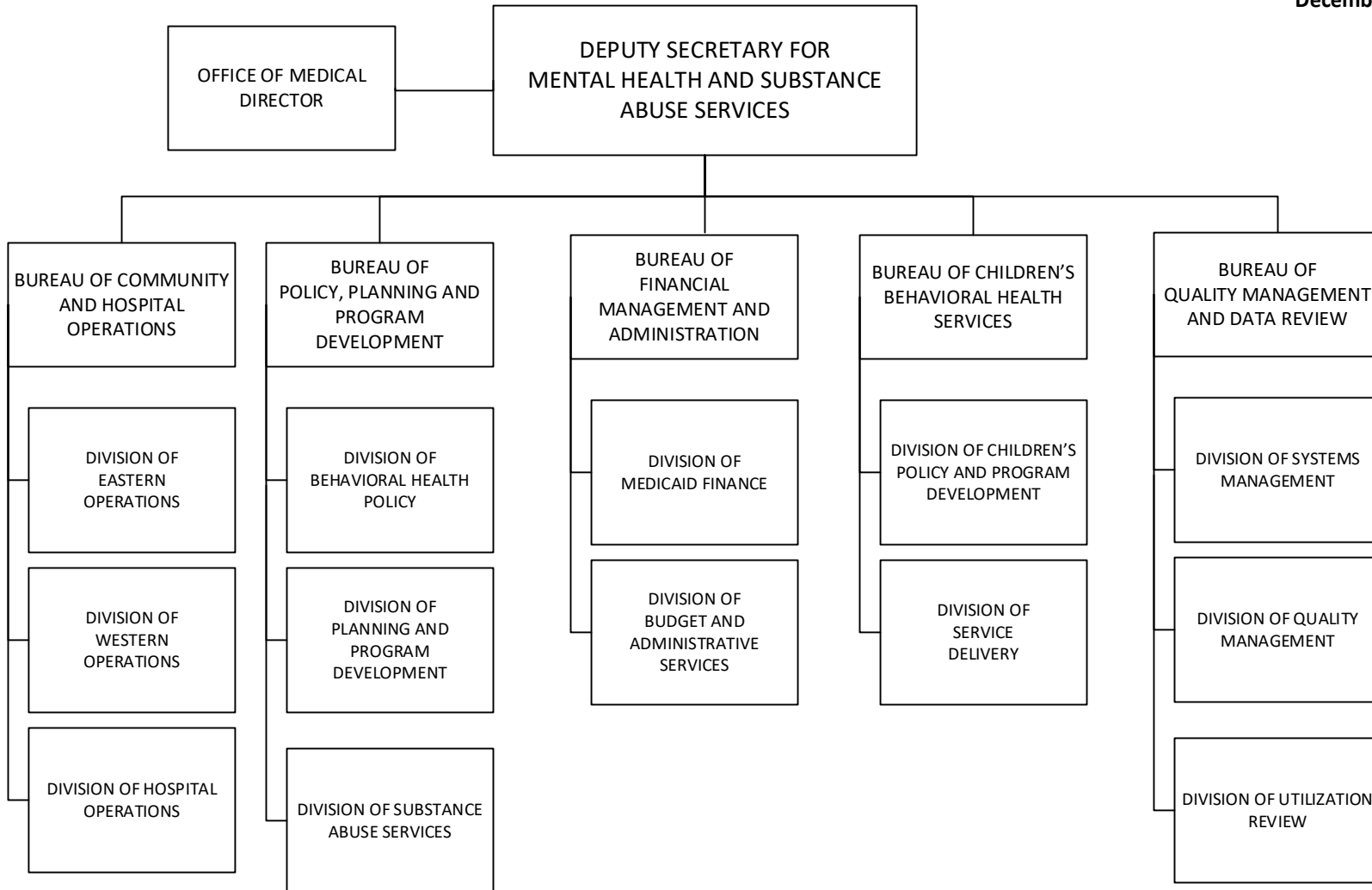
DEPARTMENT OF HUMAN SERVICES  
 DEPUTY SECRETARY FOR MEDICAL ASSISTANCE PROGRAMS

OR 19-021  
 January 28, 2020



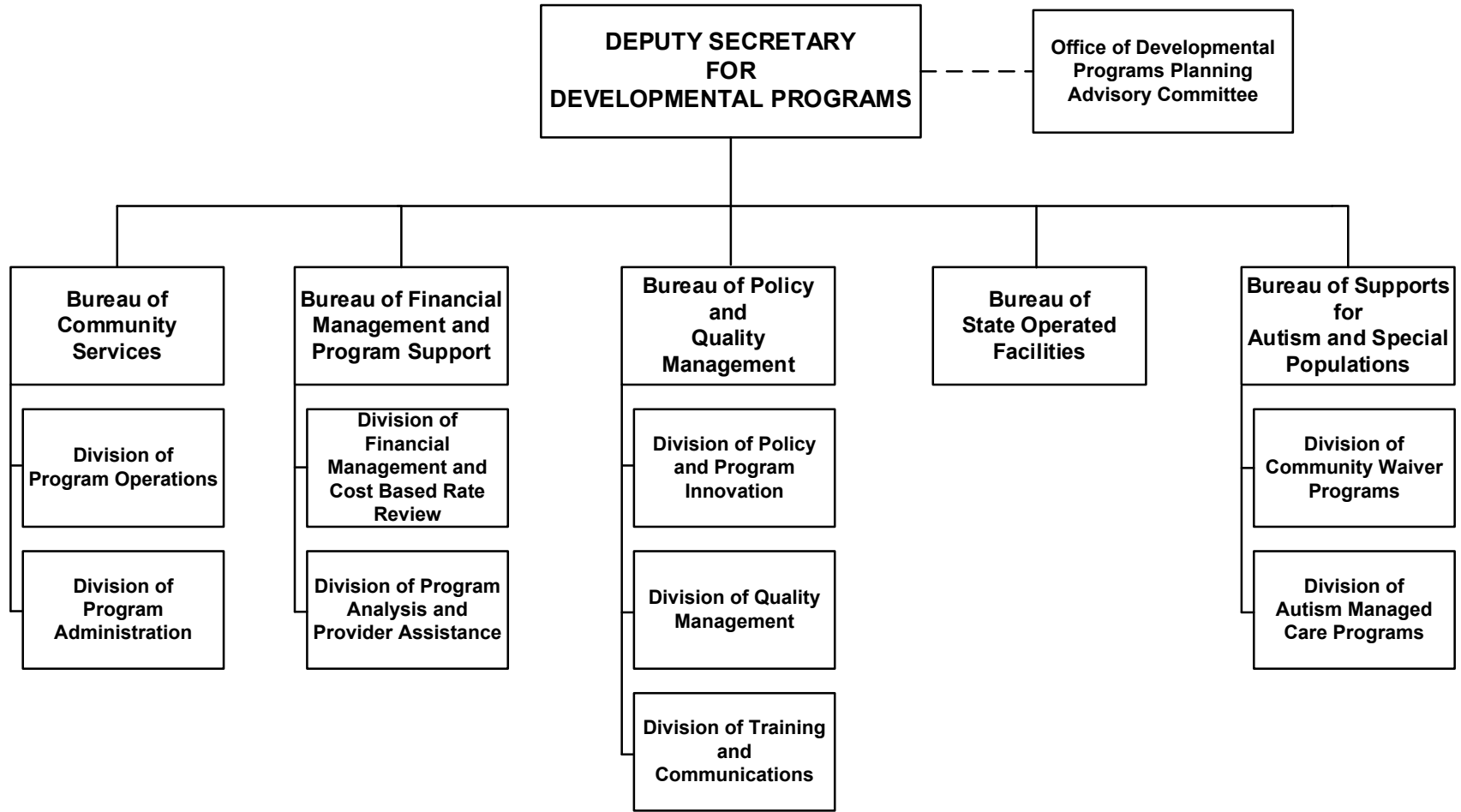
DEPARTMENT OF HUMAN SERVICES  
 DEPUTY SECRETARY FOR MENTAL HEALTH AND SUBSTANCE ABUSE SERVICES

OR-14-027  
 December 4, 2014



**DEPARTMENT OF HUMAN SERVICES  
OFFICE OF DEVELOPMENTAL PROGRAMS**

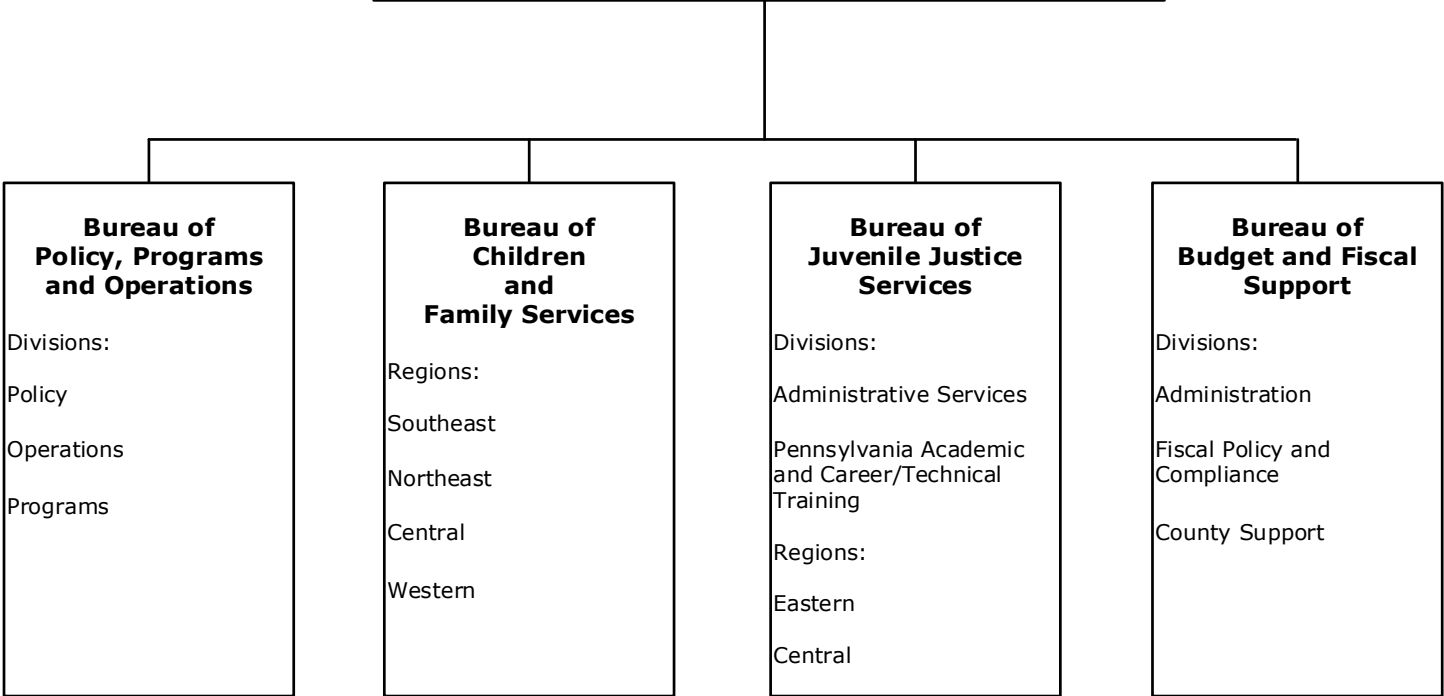
OR-19-006  
April 24, 2019



**DEPARTMENT OF HUMAN SERVICES  
DEPUTY SECRETARY FOR CHILDREN, YOUTH AND  
FAMILIES**

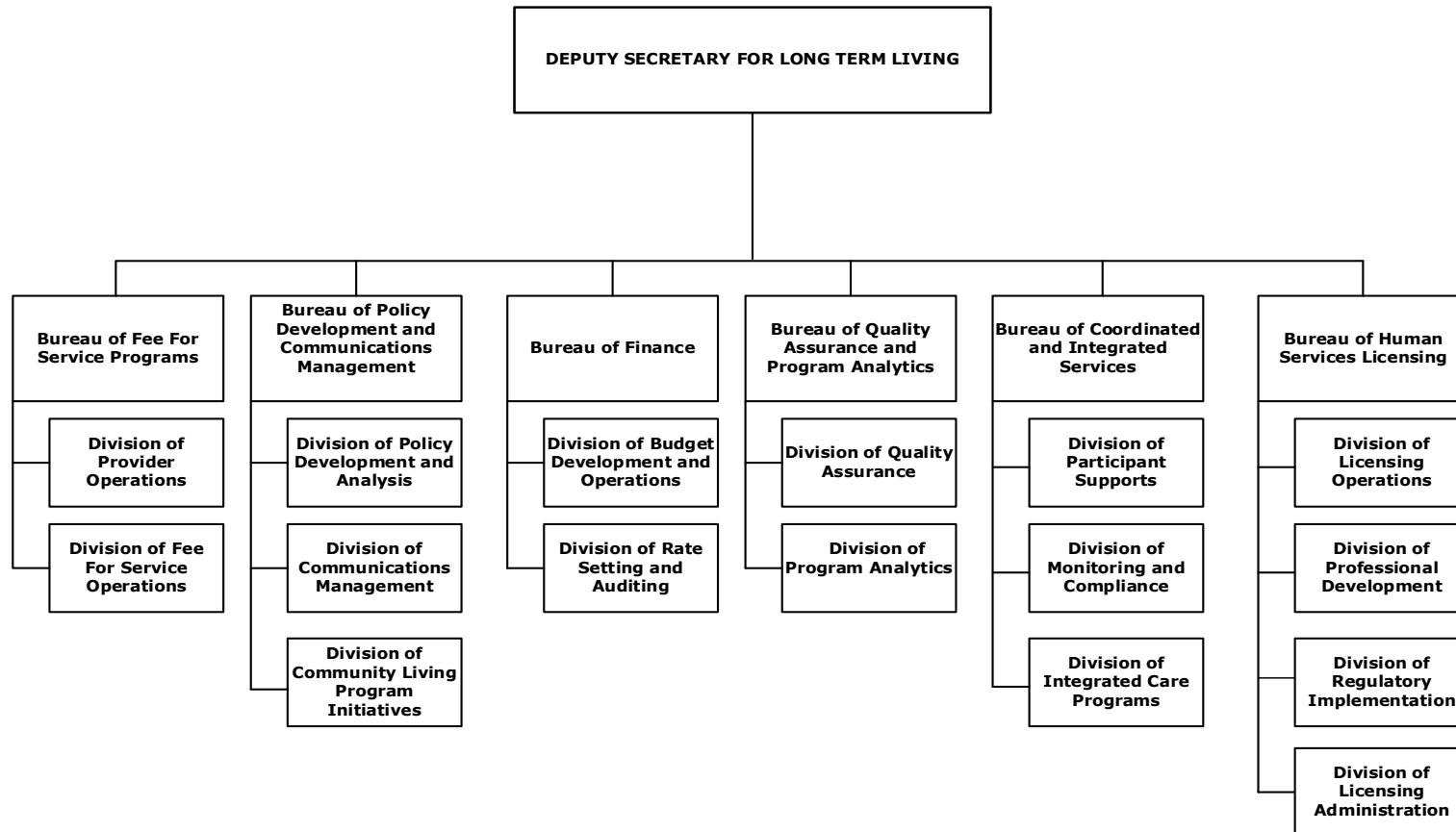
**OR-23-013  
July 5, 2023**

**DEPUTY SECRETARY FOR CHILDREN,  
YOUTH AND FAMILIES**



**DEPARTMENT OF HUMAN SERVICES  
DEPUTY SECRETARY FOR LONG TERM LIVING**

OR-20-009  
April 19, 2020



**DEPARTMENT OF HUMAN SERVICES  
DEPUTY SECRETARY FOR CHILD DEVELOPMENT AND EARLY LEARNING**

OR 21-008  
July 28, 2021

